

# Semi-Dry Blotter



Fast blotting device for agarose and protein gel, unique Bi-directional force\* design use eight pieces springs to get most even force during the blotting. Stainless steel plates as cathode, platinum plated titanium plates as anode. Supplied with high current ELITE 200 power supply for stable electric field. Capable to apply single layer four side-by-side mini gels, maximum up to 18 x 20cm gel, or transfer up to three stacking layers polyacrylamide gels. It's time saving for single or multiple blotting.

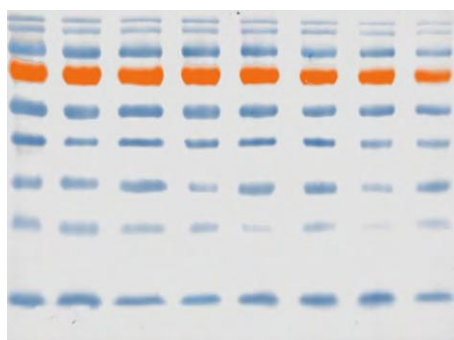
Four push lock and Bi-directional electrode plates provide even force between two electrode plates. This device extremely simple, easy assemble, apply proper buffer and ELITE power supply will get excellent result within ten minutes.



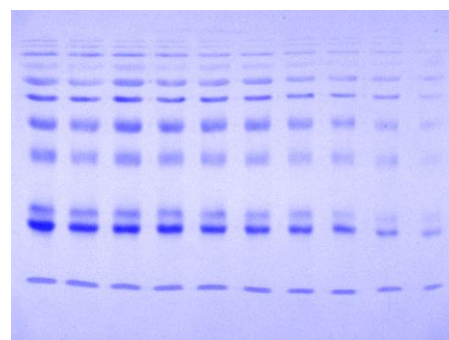
Four of 7 x 10cm gel-membrane sandwiches



Simple and quick push lock



Prestained marker transfer to PVDF



Protein marker transfer to PVDF

## Features

- Reliable low-cost semi-dry apparatus in the market
- Fast western blotting protocol less than 7 minutes
- Easy to clean and assemble device in the market
- Less than one hour transferring time
- Long life anti-corrosive electrode

## Applications

- Education, university, academic, research institute
- Analytical chemistry, molecular laboratory
- Food industrial and inspection laboratory
- Drug discovery, Biotechnology company
- Proteomics, genomics core facility
- Enzyme reaction, immunology

## Specifications

Gel size	Max. 4 pieces 100 x 80mm
Electrode size	205 x 205mm with 1mm thickness
Transfer area	180 x 200mm
Anode	Platinum plated on titanium plate
Cathode	316 stainless steel plate
Minimum transfer time	7 minutes
Force apply	Simultaneously up & down force by 8 springs*
Cable	High efficiency black & red cable
Physical dimensions	225 x 225 x 85mm (WxDxH)
Weight	1.2kg
Operating environment	Temp: 0 - 40°C, Humidity: 10 - 90% R.H. Non-condensing
Certification	CE
Recommended power supply	ELITE HC 2.5 / ELITE HC 3.0

\*Bi-directional force is the patent of Wealtec Bioscience. Patent No.:217120 / 2001-001686 / US 6,592,734 B2  
The spec is subject to change without prior notice.

## Ordering Information

Catalog No.	Description
1073012	Yrdimes, Semi-dry transfer system includes ELITE HC 2.5 Power Supply
1073013	Yrdimes, Semi-dry transfer system includes ELITE HC 3.0 Power Supply
1073003	Yrdimes, Semi-dry transfer unit
1001023	ELITE HC 2.5 Power Supply, 2-250V 10mA-2500mA, 100-240V, 50/60 Hz
1001024	ELITE HC 3.0 Power Supply, 2-300V 0.01A-3.0A, 100-240V, 50/60 Hz
1011031	ELITE 600U Power Supply, 5-600V, 1-750mA, 120-240V, 50/60 Hz
Accessories	
1012407	A pair of electrode adaptors (red one and black one) -- US type
1012410	A pair of electrode adaptors (red one and black one) -- UK type



Wealtec Bioscience Co., Ltd.  
27F., No.29-1, Sec. 2, Zhongzheng E. Rd., Danshui Dist.,  
New Taipei City 251, Taiwan  
Tel: +886-2-8809-8587 Fax: +886-2-8809-8589  
E-Mail:sales@wealtec.com Web-site:http://www.wealtec.com

No.1208SDY01©2024Wealtec Corp

